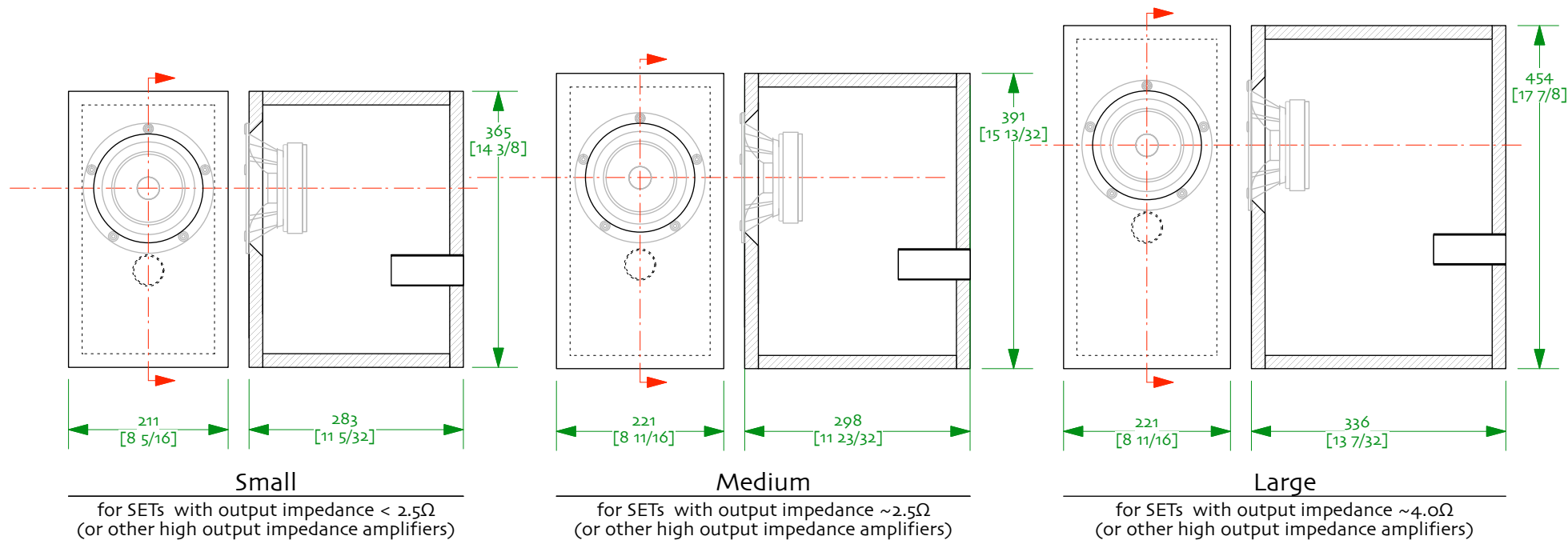


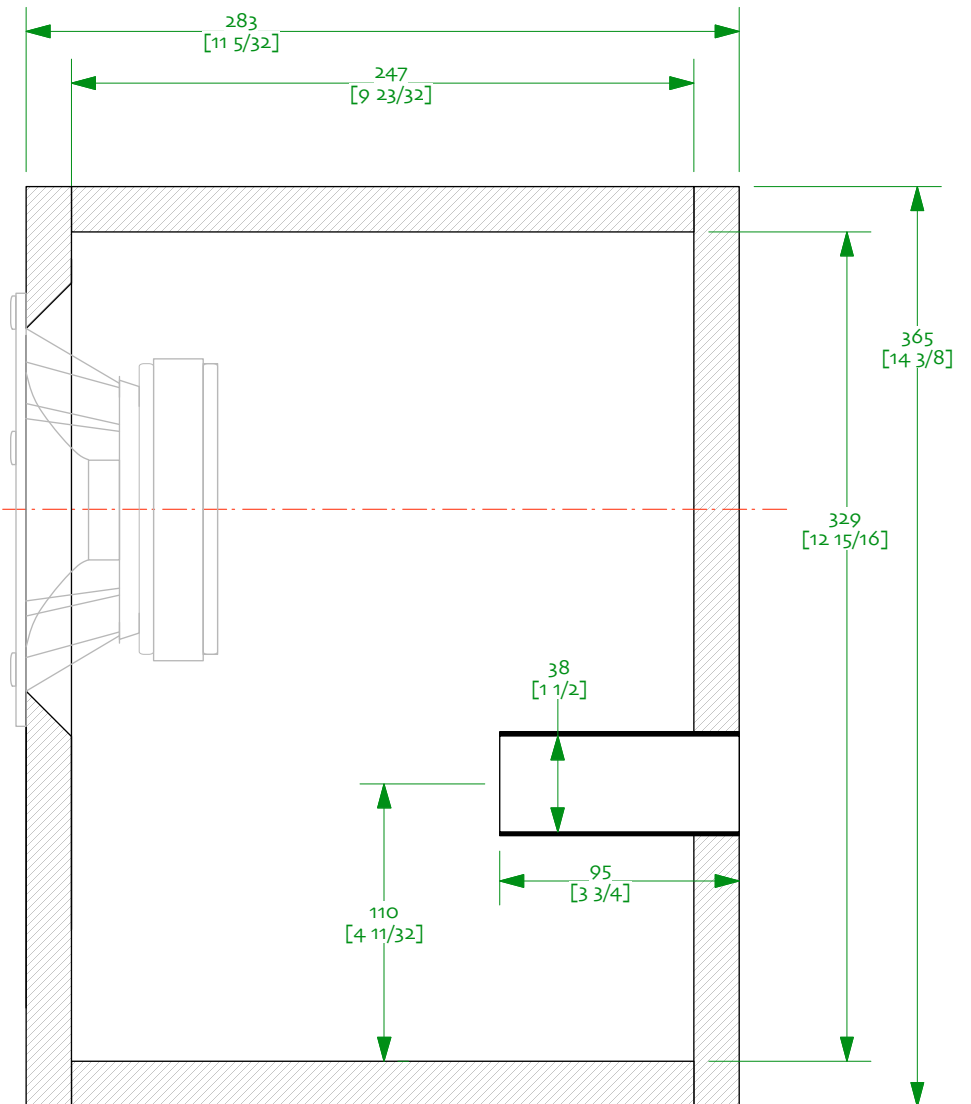
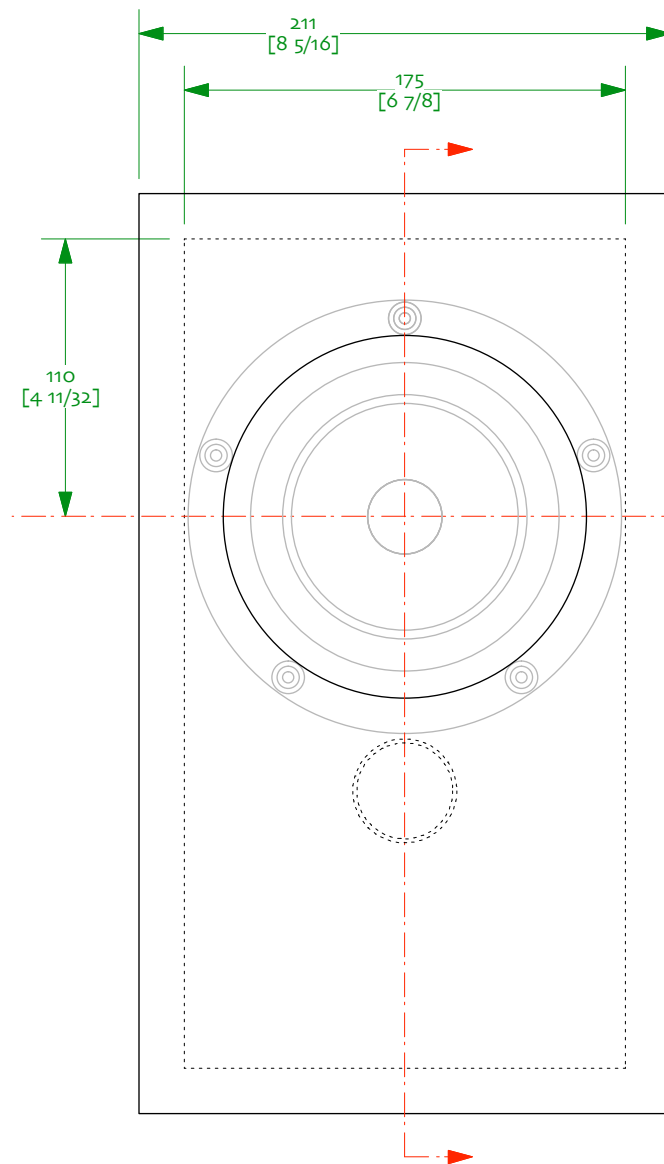


King of the Swingers

18-july-2018

Three easy to build vented boxes for Mark Audio Pluvia 11 6in wideband driver designed for use with high output impedance amplifiers. Amplifier output impedance factored into alignments. Smaller enclosure suitable for low output impedance (high damping factor) amplifiers if desired.



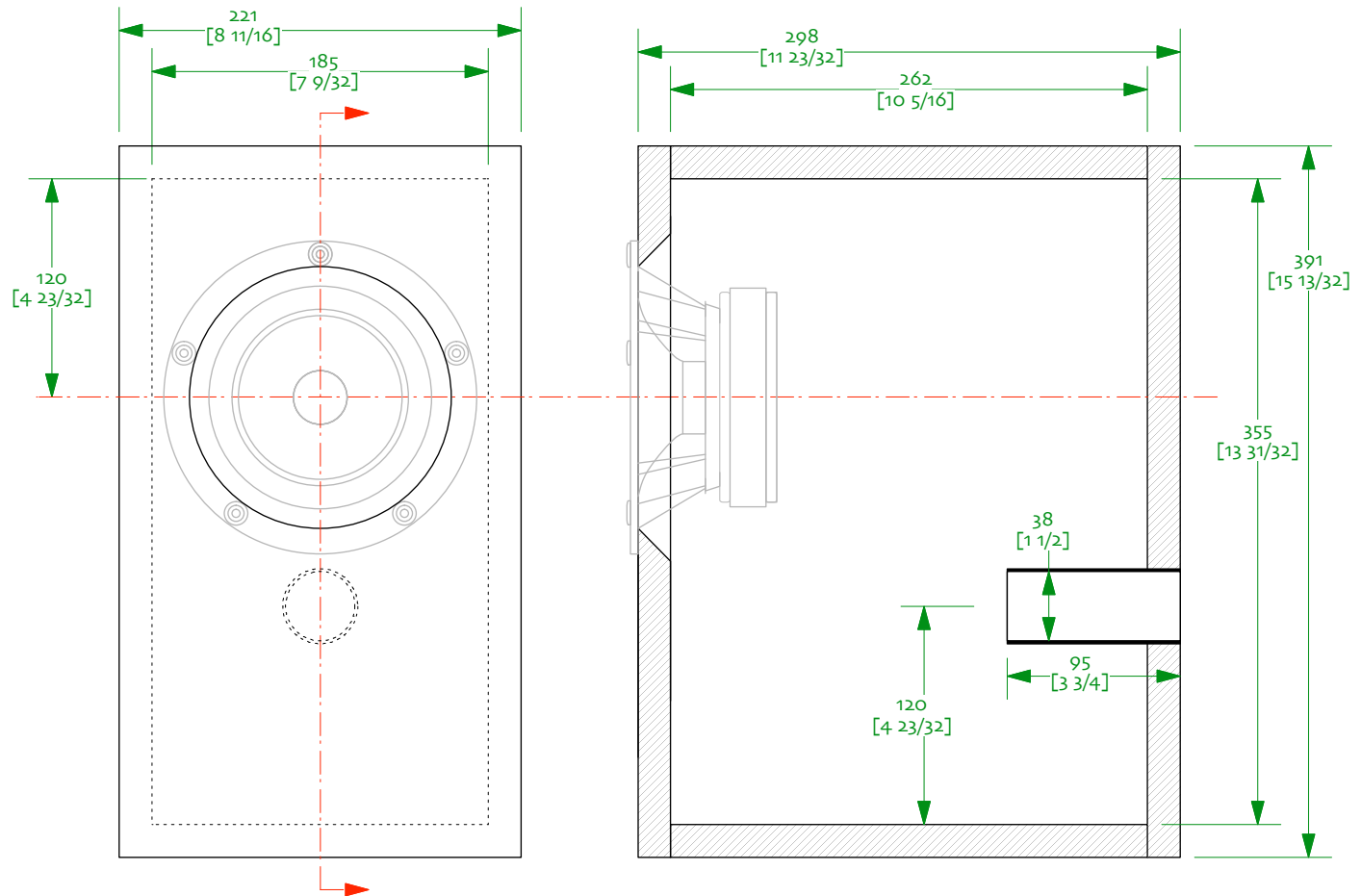


Notes:
 0/ designed for the Mark Audio Pluvia 11 – 14 litres
 1/ drawn with 18mm material. Quality multi-ply recommended
 2/ lag top, back, and one sidewall with 12-18mm cotton or wool felt or similar. Avoid acoustic foam
 3/ bracing is optional but recommended
 4/ don't forget to open up the back of the driver cut-out



King of the Swingers Small ov8

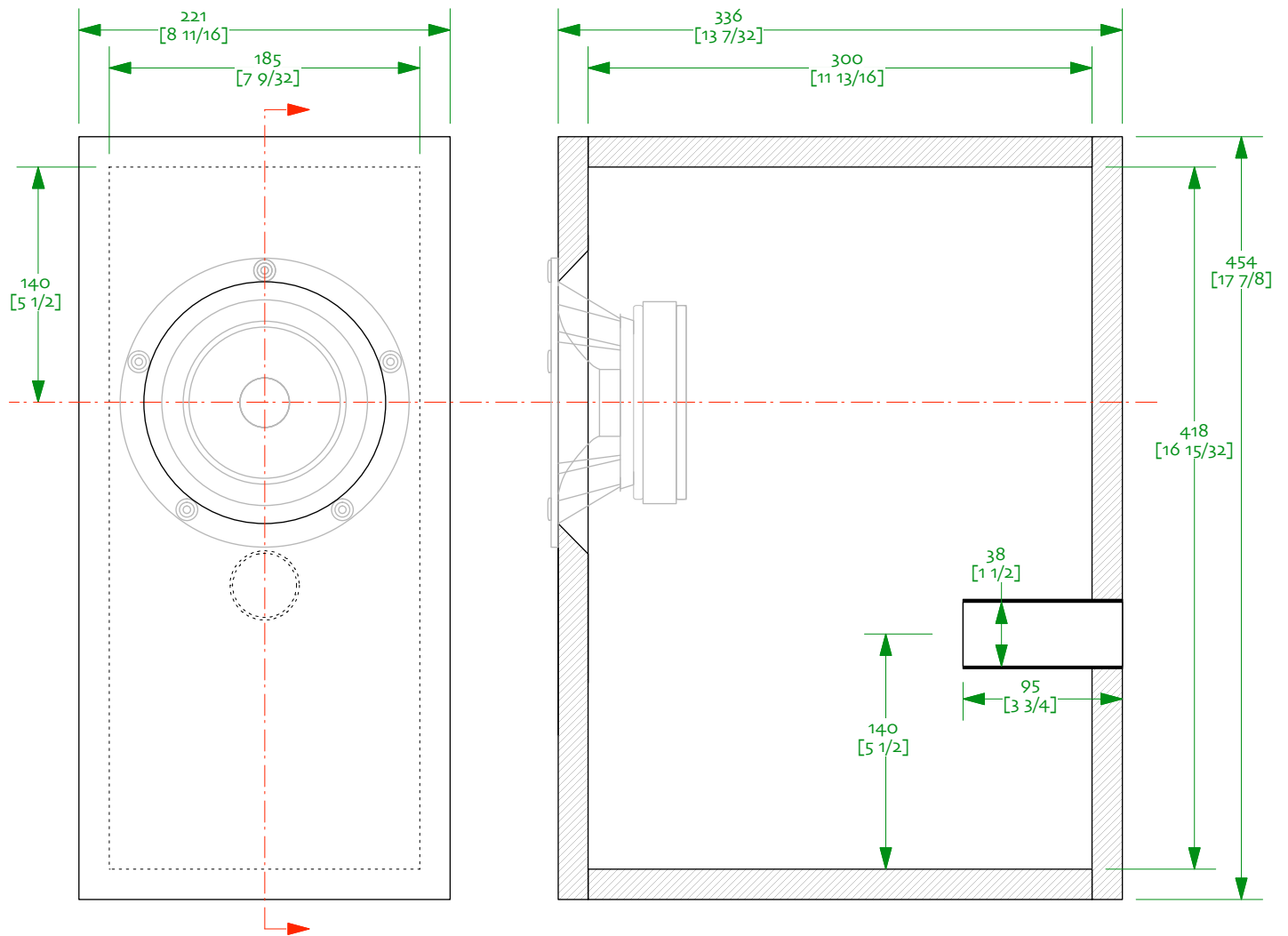
Pluvia 11
 Plan 18mm | 18-july-2018
 designed by Scott Lindgren | drawn by dld
 © 2010-18 Woden Design
 Free for non-commercial use



Notes:
 o/ designed for the Mark Audio Pluvia 11 – 17 litres
 1/ drawn with 18mm material. Quality multi-ply recommended
 2/ lag top, back, and one sidewall with 12-18mm cotton or wool felt or similar. Avoid acoustic foam
 3/ bracing is optional but recommended
 4/ don't forget to open up the back of the driver cut-out



King of the Swingers Medium ov8
 Pluvia 11
 Plan 18mm | 18-july-2018
 designed by Scott Lindgren | drawn by dld
 © 2010-18 Woden Design
 Free for non-commercial use



Notes:
 0/ designed for the Mark Audio Pluvia 11 – 23 litres
 1/ drawn with 18mm material. Quality multi-ply recommended
 2/ lag top, back, and one sidewall with 12-18mm cotton or wool felt or similar. Avoid acoustic foam
 3/ bracing is optional but recommended
 4/ don't forget to open up the back of the driver cut-out



King of the Swingers Large ov8

Pluvia 11
 Plan 18mm | 18-july-2018
 designed by Scott Lindgren | drawn by dld
 © 2010-18 Woden Design
 Free for non-commercial use