



## Kangchenjunga ML-TL ov81

Mark Audio CHN-110

Sheet 1 – 18mm plan | 23-february-2023

designed by Scott Lindgren | drawn by dld

© 2009-2023 Woden Design | for licenced use only

### Notes:

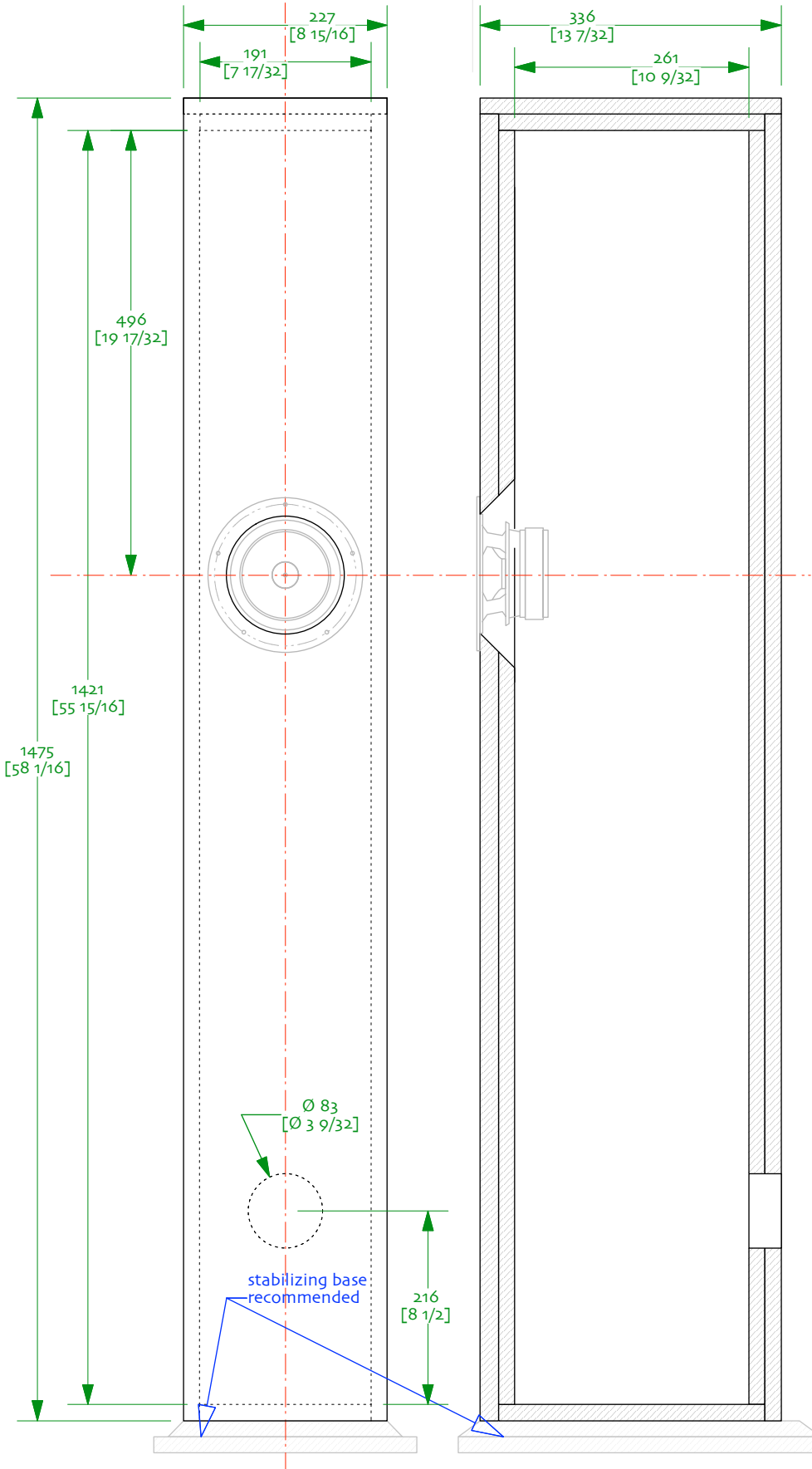
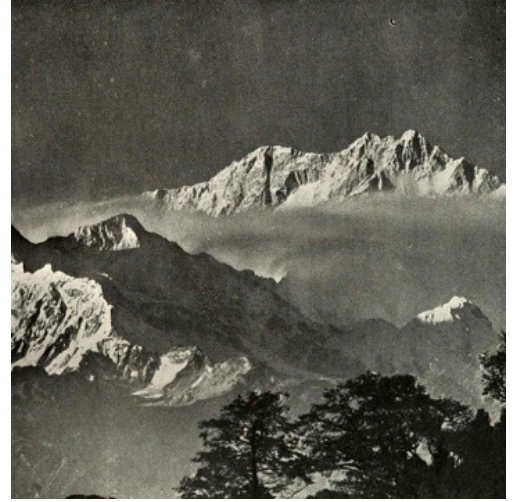
0/ low force ML-TL for CHN-110

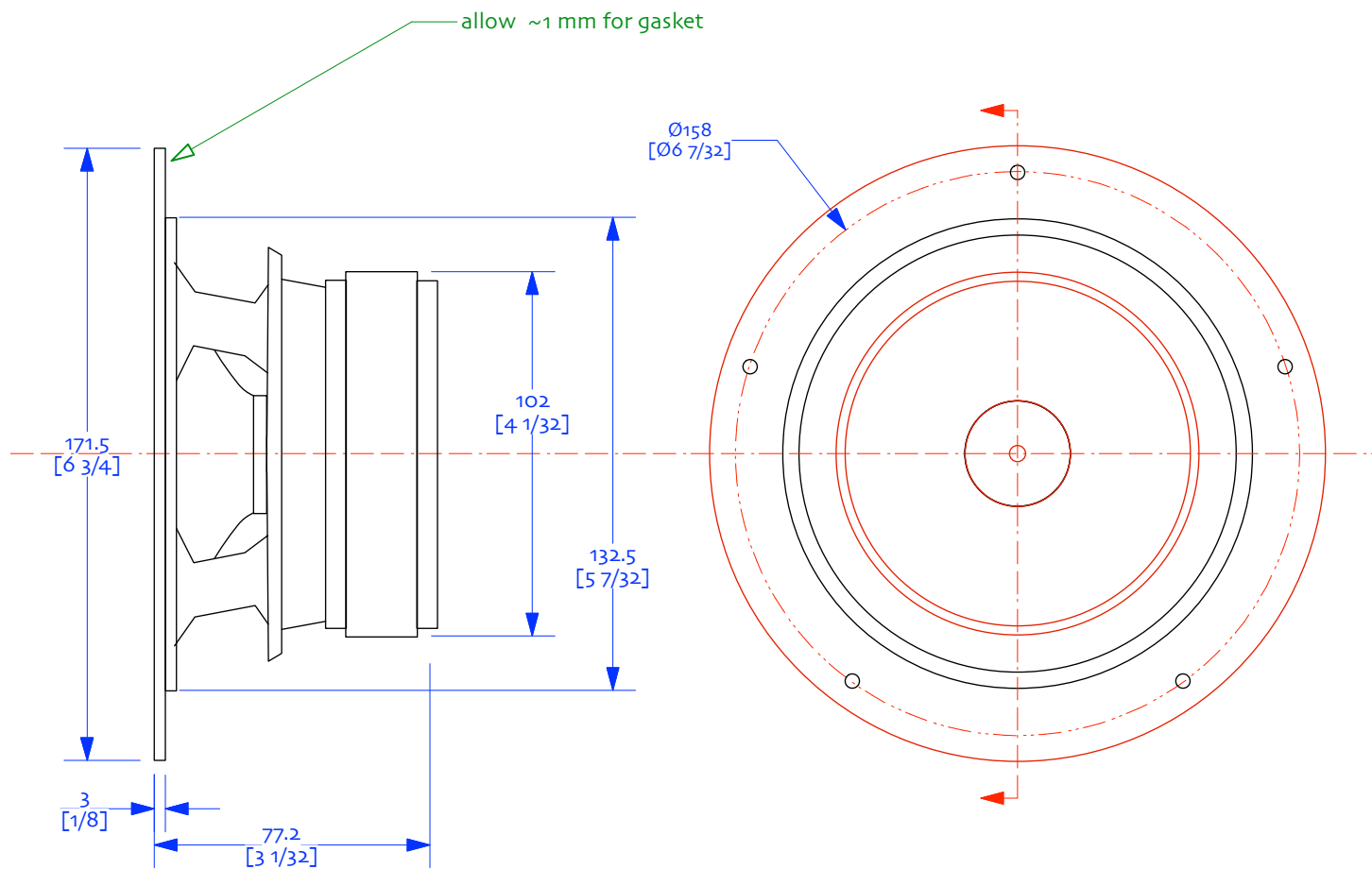
1/ All panels 18mm, high quality multi-ply recommended

2/ Don't forget to angle cut the back of the driver cut-out to give it breathing room

3/ Internal faces lagged 20mm - 25mm bonded acoustic fibreglass board, SAE-F10 soft wool felt, BAF or equivalent. Avoid acoustic foam. Ensure does not block or come into contact with driver.

4/ bracing recommended, orient vertically, increase the dimensions to maintain cross-section area





CHN 110

driver dimensions  
drawn by dld | 12-june-2021